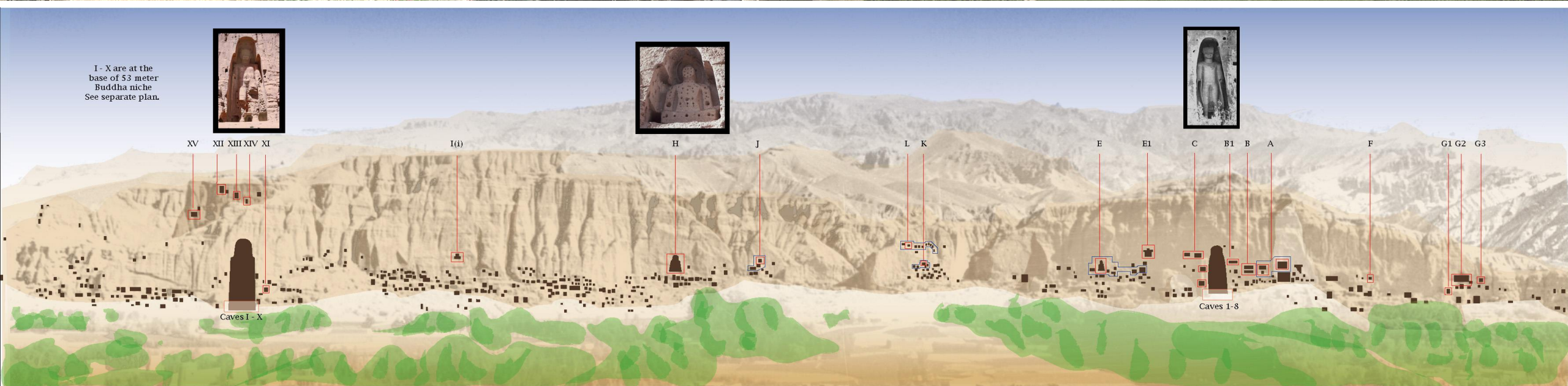


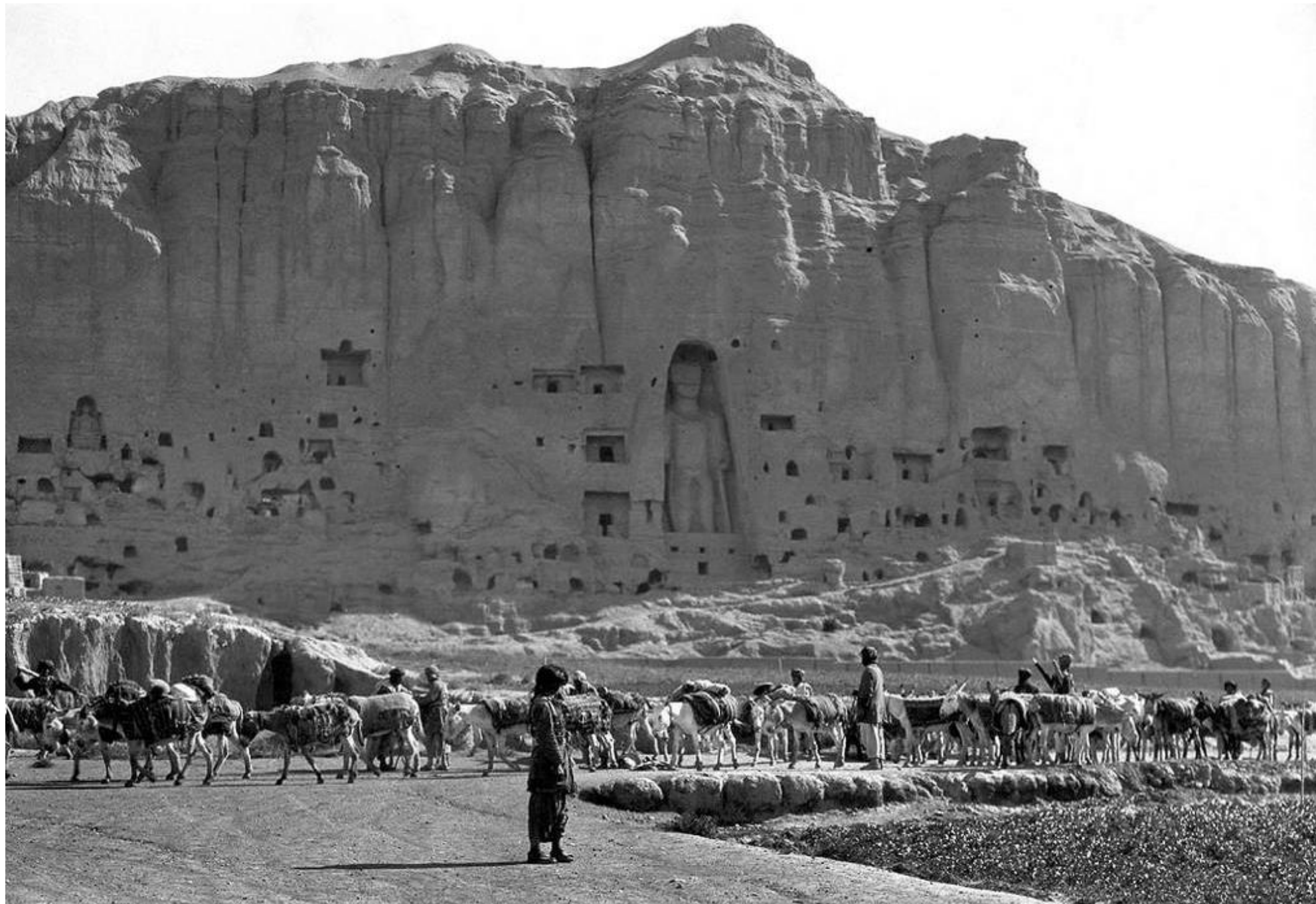
Bamiyan statues (or 'Buddhas')



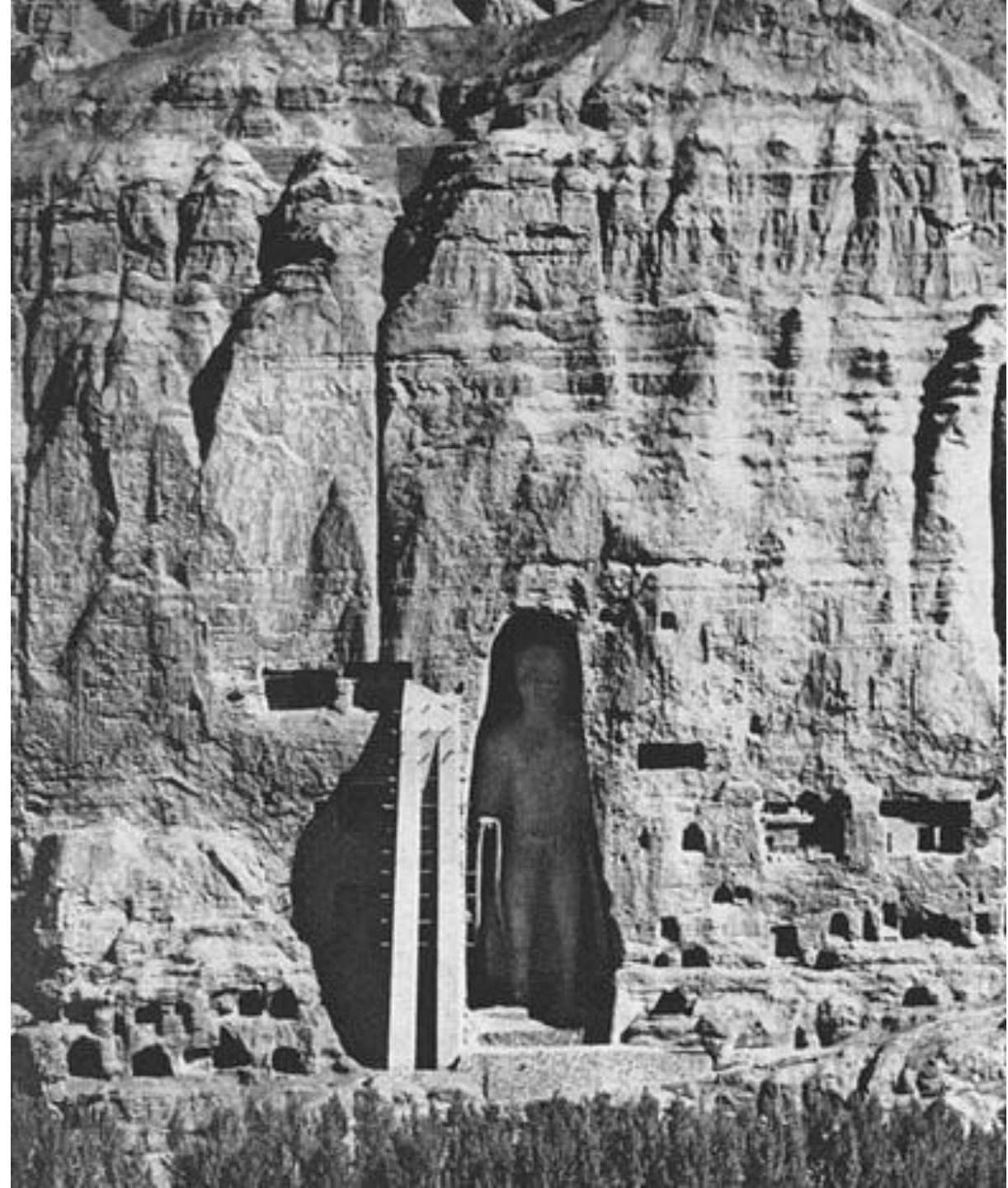
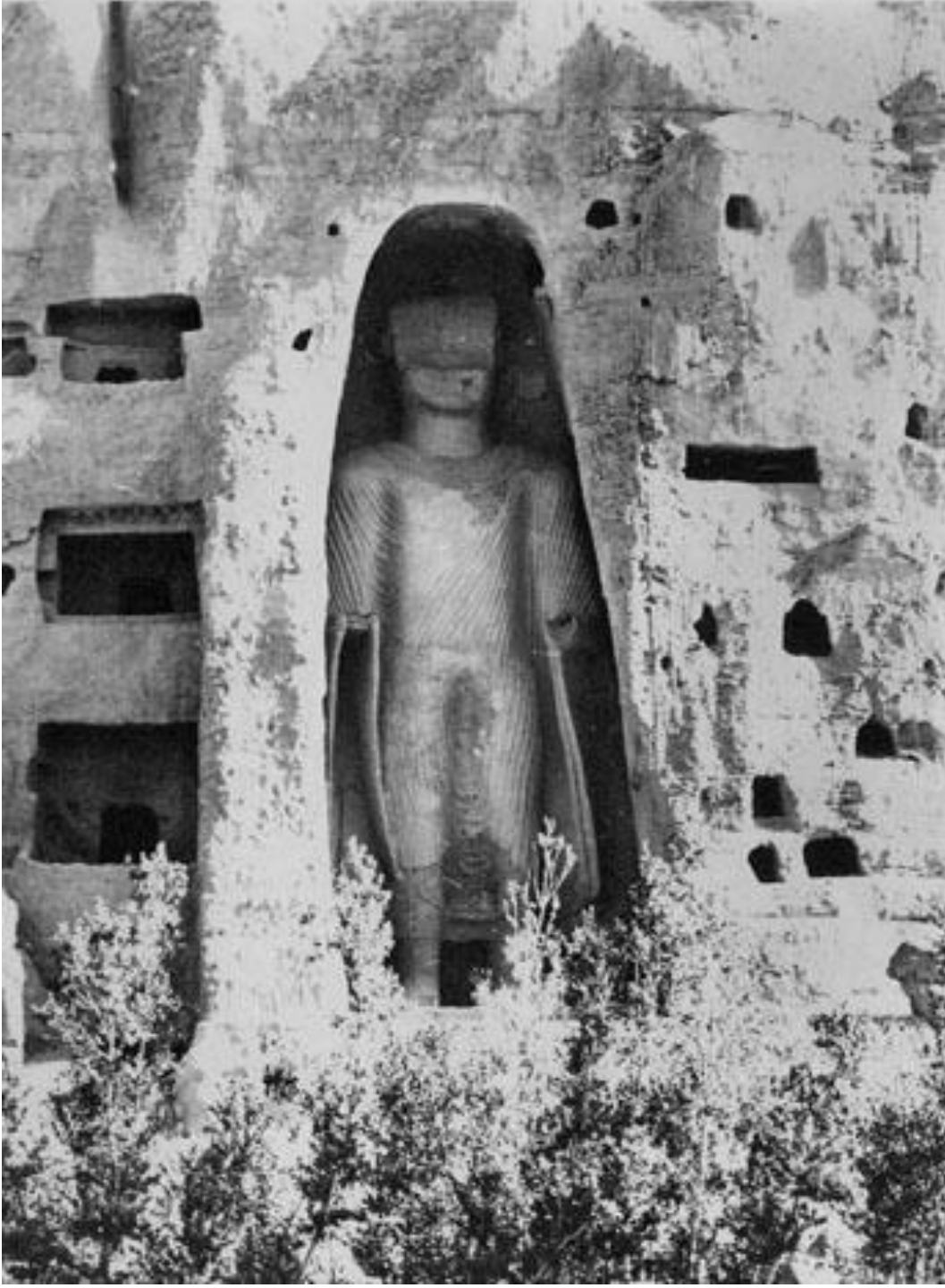
Panorama of the northern cliff of the Valley of Bamiyan, with Western and Eastern Buddhas at each end (before destruction), surrounded by a multitude of Buddhist caves. The three largest statues were 53, 38, and 19m high.
 Below: Graphic by John C. Huntington. Numbering and lettering system from Goddard, Goddard, and Hackin in *Les Antiqués Bouddhiques de Bamiyan* (1928); Zemaryalai Tarzi, *L'Architecture et le Décor Rupestre des Grottes De Bamiyan* (1977).



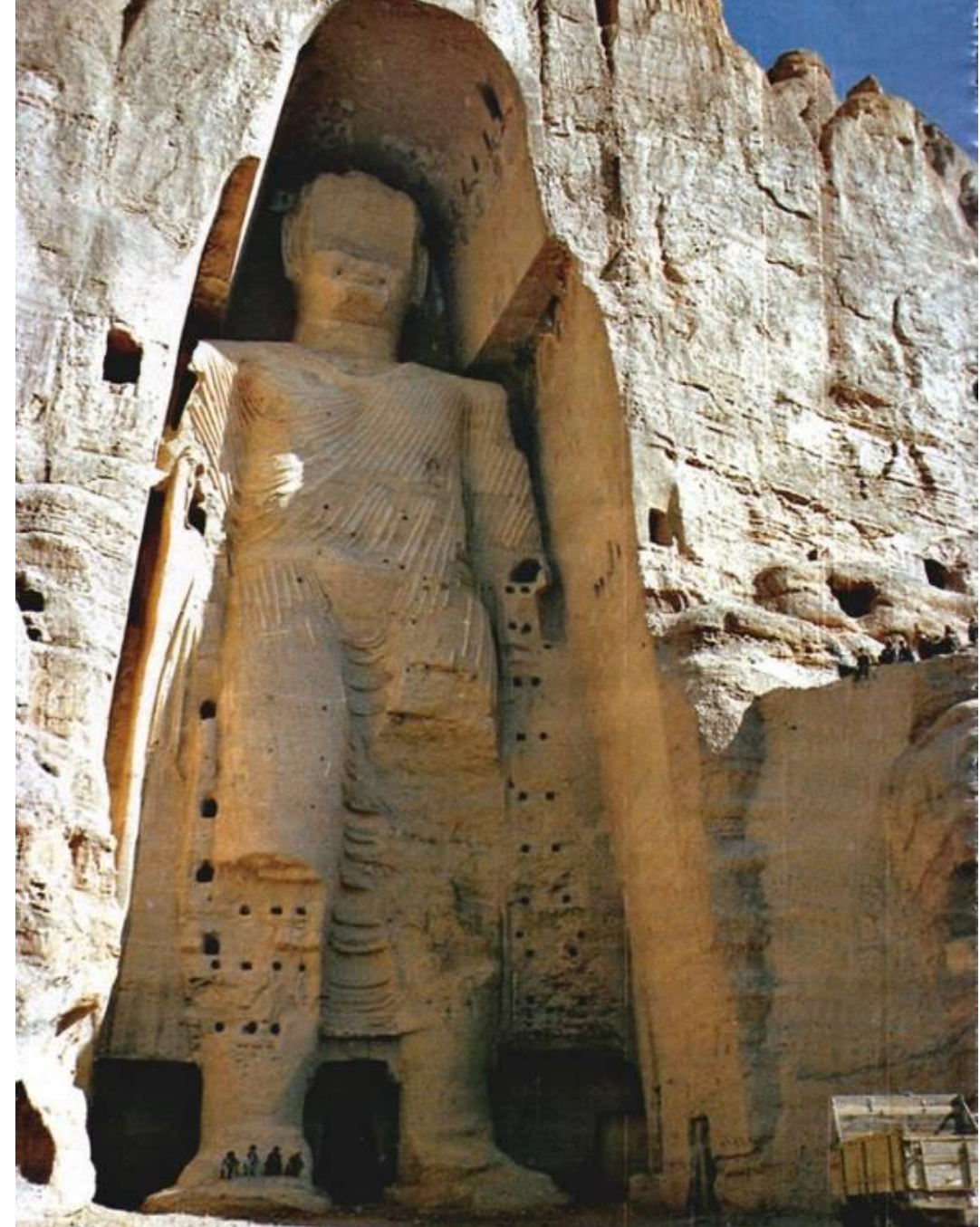
Bamiyan Buddhas No1 and 2 | gravure 1835 (Burnes)



Bamiyan Buddha No 2(1933)



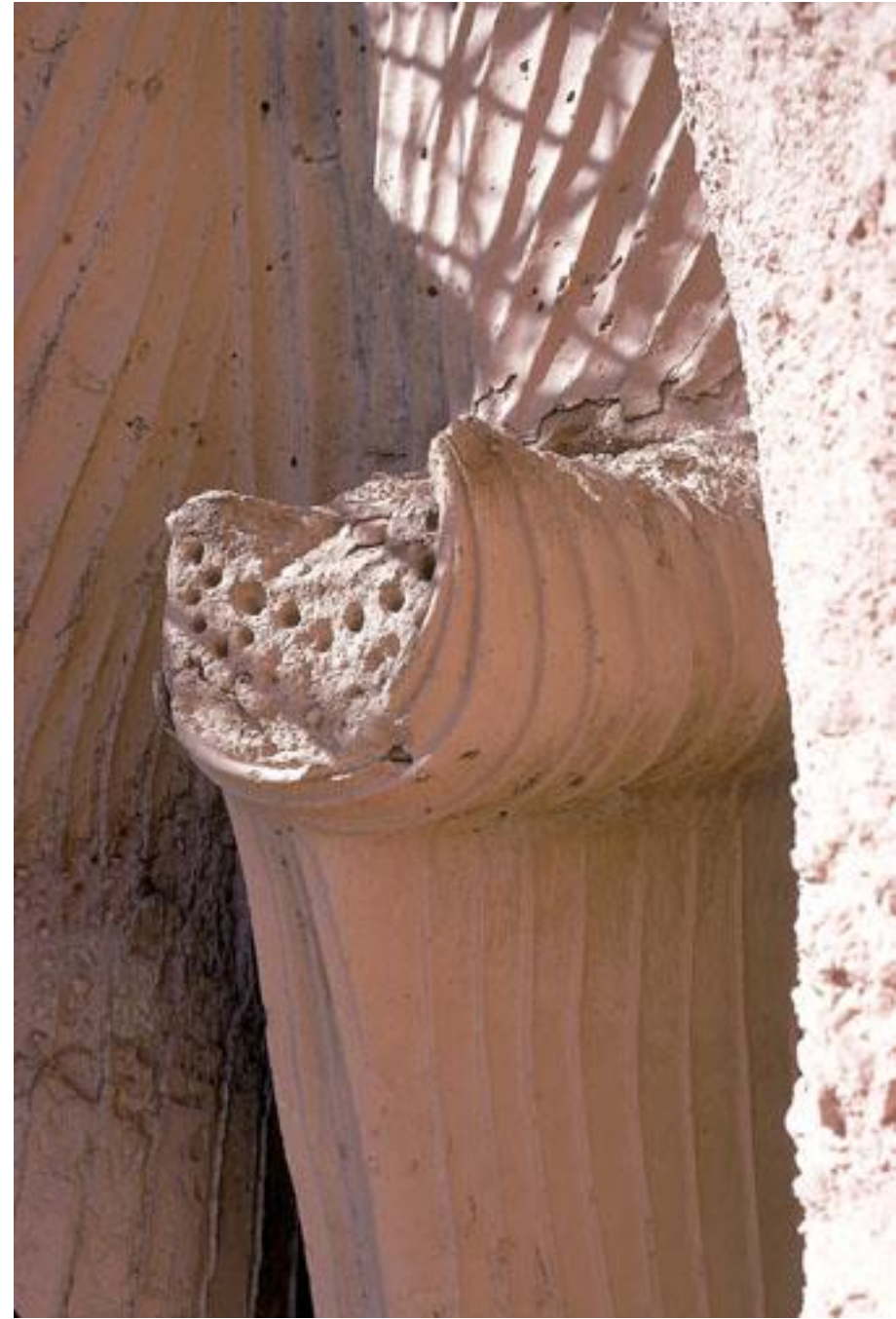




Bamiyan Buddha No 1(53m high)



Bamiyan Buddha No 2 (38m high) in 1977



Bamiyan Buddha No 2 | details head and arm





Bamiyan Buddha No 2 | cliff overview after destruction in 2001



empty niches after destruction in 2001